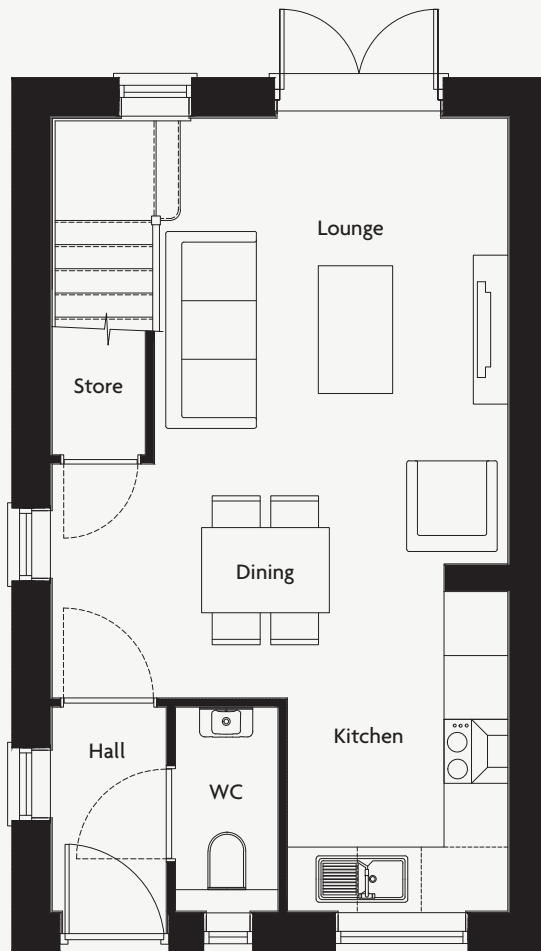


The Bradley

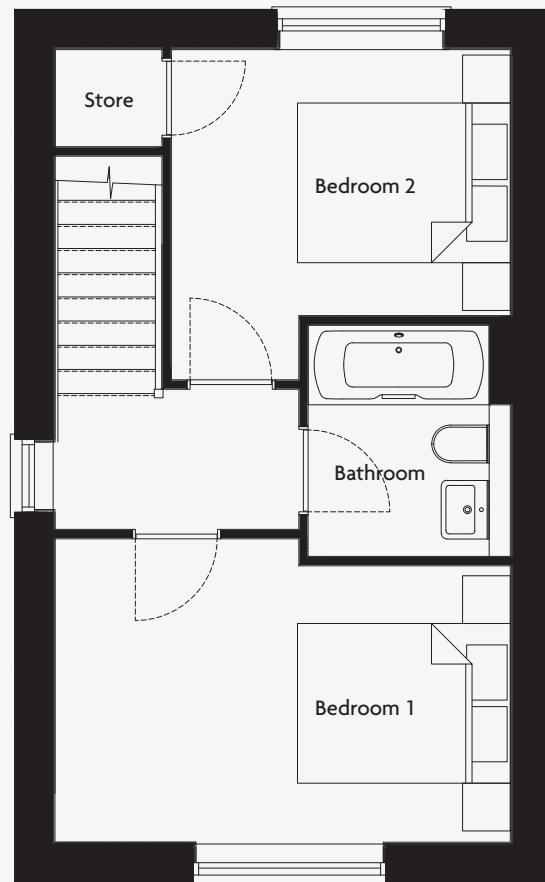
2 bedroom home



Ground Floor



First Floor



Room Dimensions

Lounge / Diner

4280 x 5445mm (14' 1" x 17' 10")

Kitchen

2072 x 3000mm (6' 10" x 9' 10")

WC

963 x 1914mm (3' 2" x 6' 3")

Bedroom 1

4280 x 2851mm (14' 1" x 9' 4")

Bedroom 2

3186 x 3102mm (10' 5" x 10' 2")

Bathroom

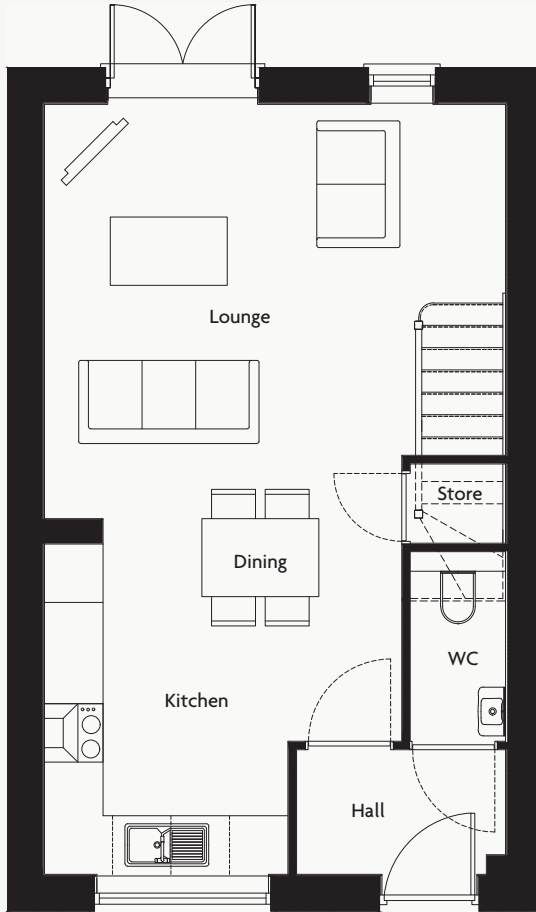
1900 x 2175mm (6' 3" x 7' 2")

The Harper

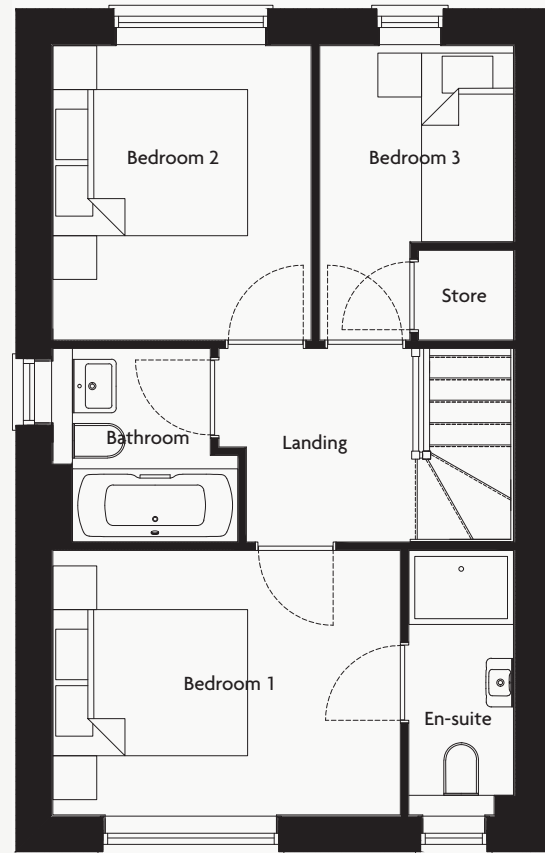
3 bedroom home



Ground Floor



First Floor



Room Dimensions

Lounge

4730 x 3600mm (15' 6" x 11' 10")

Kitchen / Diner

3665 x 4210mm (12' 0" x 13' 10")

WC

977 x 1943mm (3' 2" x 6' 4")

Bedroom 1

3568 x 2715mm (11' 8" x 8' 11")

En-suite

1074 x 2715mm (3' 6" x 8' 11")

Bedroom 2

2653 x 3021mm (8' 8" x 9' 11")

Bedroom 3

1990 x 3021mm (6' 6" x 9' 11")

Bathroom

1900 x 1985mm (6' 3" x 6' 6")