

The Buckley

2 Bedroom Home

A neat semi-detached two bedroom property, The Buckley is the ideal starter home for first time buyers.

Off the entrance hall is the fully-fitted kitchen, complete with fridge freezer, oven, hob and extractor, while opposite are the downstairs cloakroom and a handy storage area.

The large lounge/dining room at the back opens out into the garden through a set of French doors.

Upstairs are two generous double bedrooms which share a good sized family bathroom, and two further storage closets.

The property comes with a driveway providing off-road parking spaces for two vehicles and is finished in a traditional red brick.



The Buckley

2 Bedroom Home

Customers should note the illustration is an example of the specific house type. All dimensions indicated are (maximum) approximate and the furniture layout is for illustrative purposes only. Homes may be 'handed' (mirror image) versions of the illustrations, and may be detached, semi-detached or terraced. Materials used may differ from plot to plot including render and roof tile colours. Detailed plans and specifications are available for inspection for each plot at our Sales and Marketing Suite during working hours and customers must check their individual specifications prior to making a reservation.

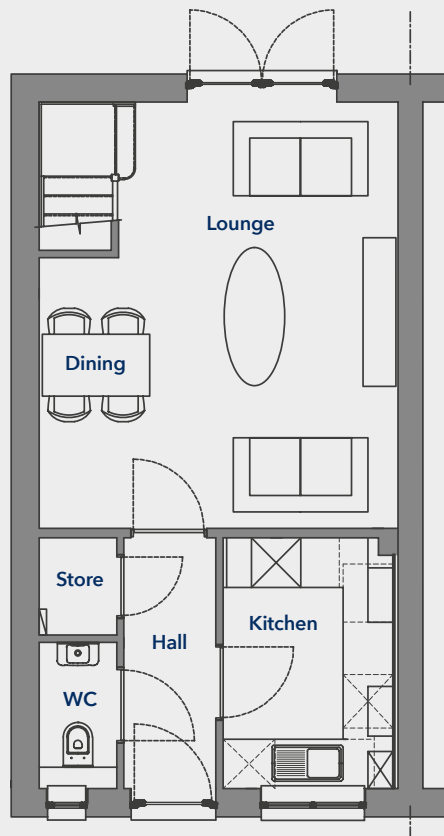
First Floor

Bedroom 1	4341 x 2890mm	(14' 2" x 9' 5")
Bedroom 2	3246 x 3195mm	(10' 7" x 10' 5")
Bathroom	2051 x 1950mm	(6' 8" x 6' 4")

Ground Floor

Lounge/Dining	5162 x 4341mm	(16' 11" x 14' 2")
Kitchen	3036 x 2054mm	(9' 11" x 6' 9")

Ground Floor



First Floor

