

The Eccleston

4 Bedroom Home

The traditionally-styled Eccleston is a handsome detached house with four bedrooms.

The kitchen-living-dining space which spans the rear of the property, has a contemporary fitted kitchen with views over the garden and French doors out to the patio. A set of interior double doors leads into the lounge, giving the option of creating a large open plan space. A study, utility room and WC complete the ground floor.

On the first floor are three double bedrooms, one with an en-suite shower room, and a smaller fourth bedroom. There is also a family bathroom which is finished with contemporary sanitaryware and fittings.

The Eccleston has a separate single garage and driveway.



The Eccleston

4 Bedroom Home

Customers should note the illustration is an example of the specific house type. All dimensions indicated are (maximum) approximate and the furniture layout is for illustrative purposes only. Homes may be 'handed' (mirror image) versions of the illustrations, and may be detached, semi-detached or terraced. Materials used may differ from plot to plot including render and roof tile colours. Detailed plans and specifications are available for inspection for each plot at our Sales and Marketing Suite during working hours and customers must check their individual specifications prior to making a reservation.

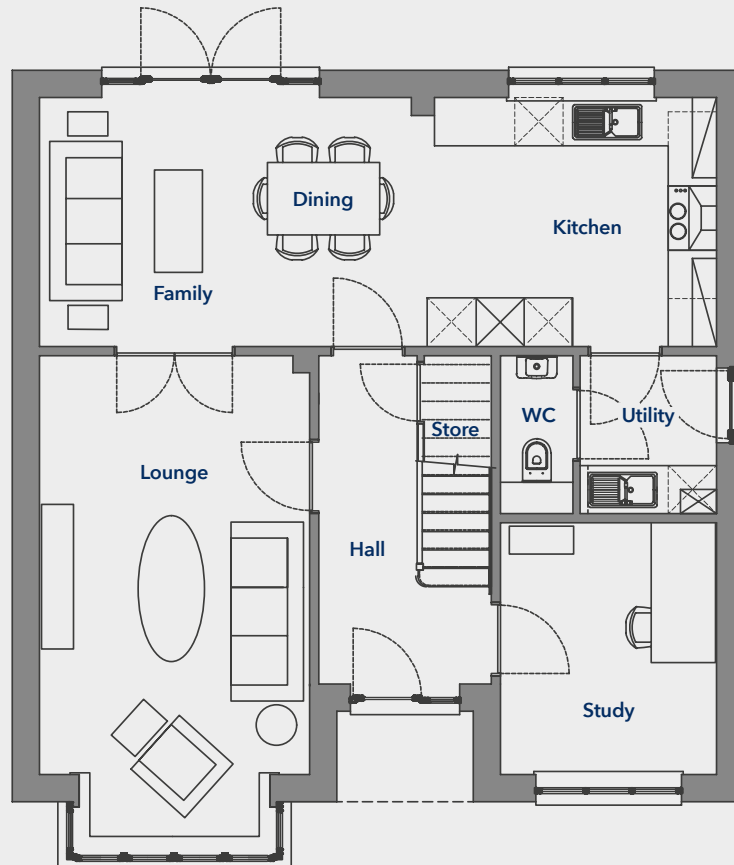
First Floor

Bedroom 1	4545 x 3437mm	(14' 11" x 11' 3")
En-suite	2653 x 1200mm	(8' 8" x 3' 11")
Bedroom 2	3791 x 3769mm	(12' 5" x 12' 4")
Bedroom 3	3612 x 2653mm	(11' 10" x 8' 8")
Bedroom 4	3442 x 3314mm	(11' 3" x 10' 10")
Bathroom	2281 x 2164mm	(7' 5" x 7' 1")

Ground Floor

Lounge	5212 x 3362mm	(17' 1" x 11' 0")
Kitchen	3511 x 3099mm	(11' 6" x 10' 2")
Family/Dining	4914 x 3099mm	(16' 1" x 10' 2")
Study	3132 x 2687mm	(10' 3" x 8' 9")

Ground Floor



First Floor

