

The Howarth

4 Bedroom Home

A four bedroom detached home with integral garage, The Howarth is designed in a traditional style with a bay window to the front.

The lounge leads through internal double doors to the spacious family kitchen diner. This open plan space comprises a fitted kitchen, with plenty of room for a dining table and seating area, and French doors out into the garden. There is a separate WC off the hallway.

On the first floor are four generous double bedrooms, two of which have their own en-suite shower room, ideal for use as a master bedroom and guest suite. Bedrooms three and four have access to the family bathroom, which comes complete with contemporary sanitaryware and fittings.



The Howarth

4 Bedroom Home

Customers should note the illustration is an example of the specific house type. All dimensions indicated are (maximum) approximate and the furniture layout is for illustrative purposes only. Homes may be 'handed' (mirror image) versions of the illustrations, and may be detached, semi-detached or terraced. Materials used may differ from plot to plot including render and roof tile colours. Detailed plans and specifications are available for inspection for each plot at our Sales and Marketing Suite during working hours and customers must check their individual specifications prior to making a reservation.

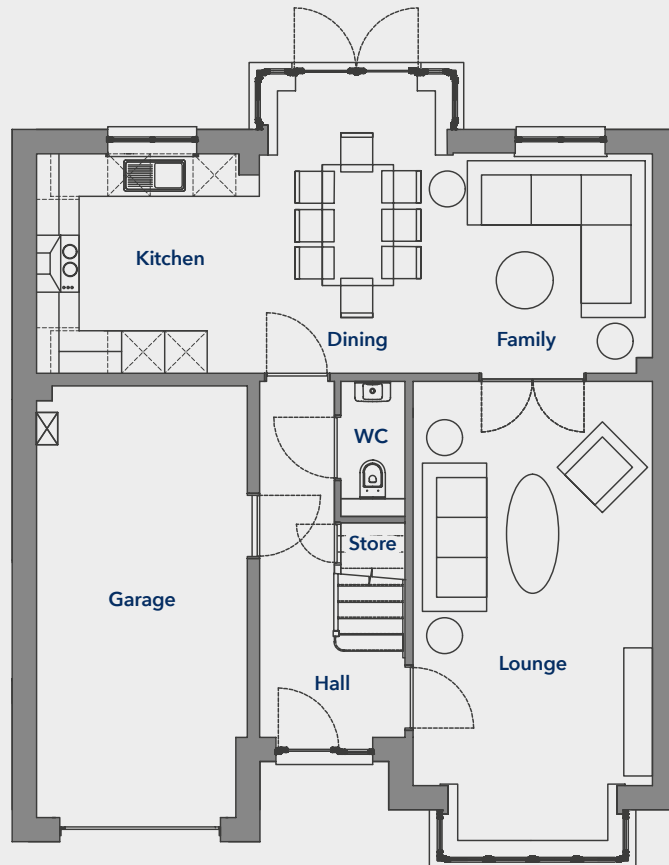
First Floor

Bedroom 1	3811 x 3362mm	(12' 6" x 11' 0")
En-suite 1	2138 x 1425mm	(7' 0" x 4' 8")
Bedroom 2	4095 x 2948mm	(13' 5" x 9' 8")
En-suite 2	2858 x 1740mm	(9' 4" x 5' 8")
Bedroom 3	3462 x 3360mm	(11' 4" x 11' 0")
Bedroom 4	3336 x 2858mm	(10' 11" x 9' 4")
Bathroom	2255 x 2165mm	(7' 4" x 7' 1")

Ground Floor

Lounge	5675 x 3362mm	(18' 7" x 11' 0")
Kitchen	3131 x 3086mm	(10' 3" x 10' 1")
Family/Dining	5518 x 3086mm	(18' 1" x 10' 1")

Ground Floor



First Floor

