

The Talbot

3 Bedroom Home

The Talbot is a detached three bedroom home with integral single garage and two off-road parking spaces.

The ground floor of The Talbot has a huge kitchen-dining-living area, ideal for family life and entertaining.

The fully-fitted L-shaped kitchen comes complete with a range of integral appliances, making it easy to keep an eye on the kids in the lounge area or chat with guests while cooking up a storm.

Bringing the outside in, there is also direct access to the garden through a set of double doors at the back.

Upstairs there are three double bedrooms off the bright and airy landing, and a generous family bathroom.

The master suite overlooks the front of the house and benefits from an en-suite shower room.

The property, which is available in a traditional stone or red brick finish, also has a driveway with space for two vehicles.



The Talbot

3 Bedroom Home

Customers should note the illustration is an example of the specific house type. All dimensions indicated are (maximum) approximate and the furniture layout is for illustrative purposes only. Homes may be 'handed' (mirror image) versions of the illustrations, and may be detached, semi-detached or terraced. Materials used may differ from plot to plot including render and roof tile colours. Detailed plans and specifications are available for inspection for each plot at our Sales and Marketing Suite during working hours and customers must check their individual specifications prior to making a reservation.

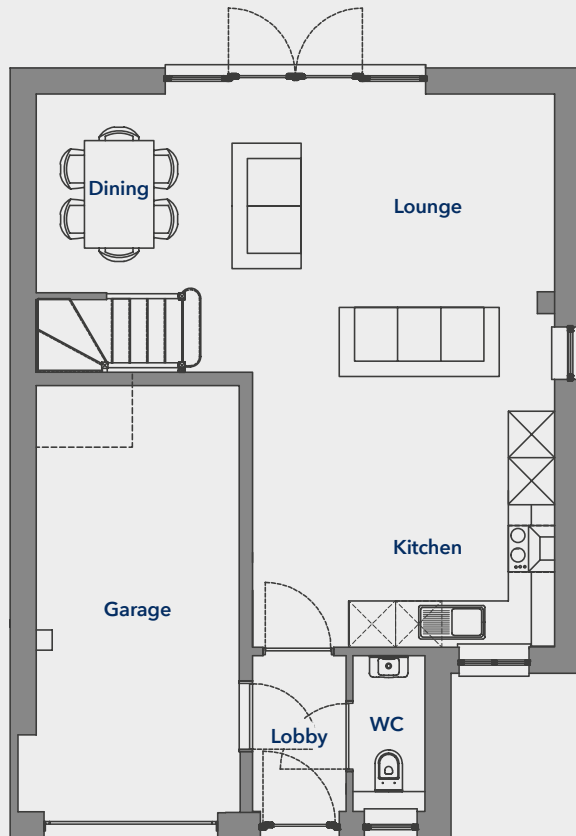
First Floor

Bedroom 1	4080 x 3040mm	(13' 10" x 9' 11")
En-suite	2325 x 1425mm	(7' 6" x 4' 6")
Bedroom 2	3444 x 2545mm	(11' 3" x 8' 4")
Bedroom 3	3204 x 2545mm	(10' 6" x 8' 4")
Bathroom	2507 x 2417mm	(8' 2" x 7' 11")

Ground Floor

Lounge	3925 x 3926mm	(14' 11" x 12' 10")
Dining	2811 x 2545mm	(9' 2" x 8' 4")
Kitchen	3926 x 2636mm	(12' 10" x 8' 7")

Ground Floor



First Floor

