

The Worrall

4 Bedroom Home

A traditionally-styled four bedroom detached home, The Worrall has a single integral garage and driveway with space for two vehicles. The home comes in a red brick or traditional stone finish.

The downstairs layout provides the best of both worlds for those who can't decide between open plan and cosy separate spaces.

At the rear of the property is a large open plan kitchen-living-dining area which opens out into the rear garden through a set of double doors.

A separate lounge at the front of the property can open into the kitchen diner to create a lovely flow around the ground floor, or closed off when a little more peace and quiet is desired.

The downstairs cloakroom is off the entrance hall, opposite the door into the garage.

On the first floor are three double bedrooms and a generous single.

The master bedroom benefits from an en-suite shower room, while a good sized family bathroom is shared by the other rooms.



The Worrall

4 Bedroom Home

Customers should note the illustration is an example of the specific house type. All dimensions indicated are (maximum) approximate and the furniture layout is for illustrative purposes only. Homes may be 'handed' (mirror image) versions of the illustrations, and may be detached, semi-detached or terraced. Materials used may differ from plot to plot including render and roof tile colours. Detailed plans and specifications are available for inspection for each plot at our Sales and Marketing Suite during working hours and customers must check their individual specifications prior to making a reservation.

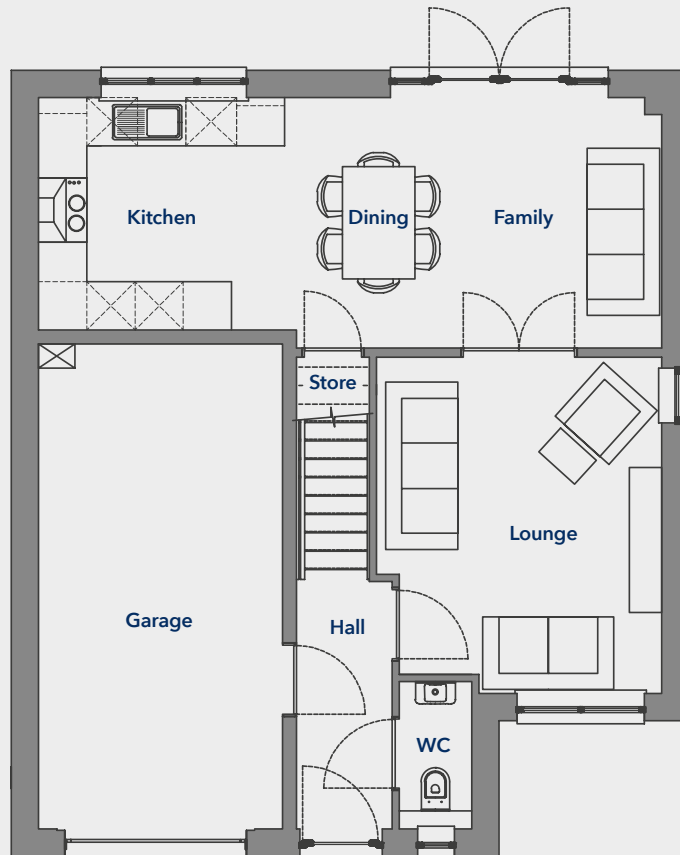
First Floor

Bedroom 1	3604 x 3548mm	(11' 9" x 11' 7")
En-suite	2103 x 1425mm	(6' 10" x 4' 8")
Bedroom 2	3604 x 3121mm	(11' 9" x 10' 2")
Bedroom 3	3720 x 2756mm	(12' 2" x 9' 0")
Bedroom 4	3720 x 2562mm	(12' 2" x 8' 4")
Bathroom	2253 x 1925mm	(7' 2" x 6' 3")

Ground Floor

Lounge	4182 x 3548mm	(13' 8" x 11' 7")
Family/Dining	4689 x 3116mm	(15' 4" x 10' 2")
Kitchen	3061 x 2891mm	(10' 0" x 9' 5")

Ground Floor



First Floor

